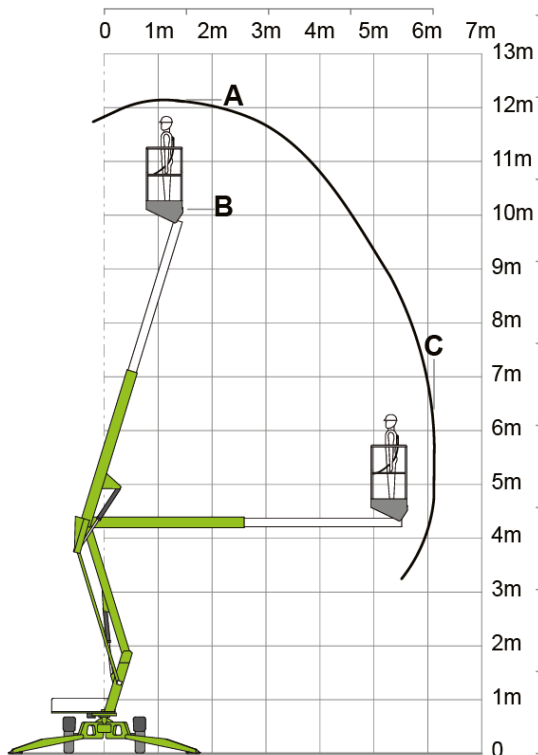
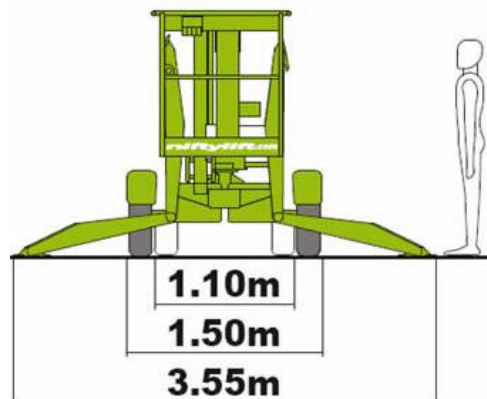
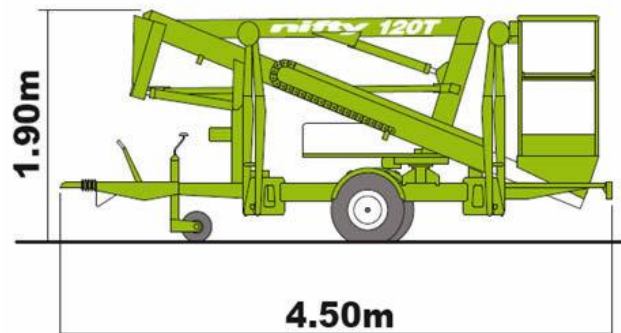


Anhängerhebebühne Niftylift 120T



A: 12.2m, B: 10.20m, C: 6.10m



| Techn. Daten | |
|--------------------|--------------|
| max. Nutzlast Korb | 200kg |
| Masse Korb | 1.1m x 0.65m |
| Gesamtgewicht | 1400kg |
| Drehung | 360° |
| Antrieb | 230V/13A |

| Mietpreise | |
|-------------------------|--------------------|
| Mietdauer: | Preis exkl. MwSt.: |
| 1 Stunde | 75.- |
| ½ Tag | 150.- |
| 1 Tag | 250.- |
| pro 1 Tag (ab 2–5 Tage) | 200.- |